

INSTRUCTOR:

DANNELLE LARSEN-RIFE, PH.D.

CONTACT INFORMATION:

Phone: (435)652-7823

e-mail: dlarsenrife@dixie.edu

Office Location: 225 McDonald

Office Hours: Monday and Wednesday 11:30 am to 12:00 pm and 3:00 to 4:30 pm; and Thursday 2:15 to 3:00 pm, or by appointment**REQUIRED TEXT:**Cozolino (2006). *The Neuroscience of Human Relationships: Attachment and the Developing Social Brain*. New York., NY Norton & Company.

Available at the Dixie State College bookstore and

IMPORTANT DATES

Classwork starts	20 Aug
Last day to add without a signature	24 Aug
Drop/Audit fee begins (\$10 per class)	27 Aug
\$50 Late registration/Payment fee	4 Sep
Last day for a refund, Pell Grant census, Last day to drop without receiving a "W" grade	10 Sep
Courses dropped for nonpayment	11 Sep
Last day to ADD classes	14 Sep
Graduation application deadline for Fall 2012	1 Oct
Last day to DROP classes	15 Oct
Graduation application deadline for Spring 2012	1 Nov
Last day for complete withdrawal	9 Nov
Classwork ends	7 Dec
Final Exam	10 Dec

Interpersonal Neuroscience

PSY 4130, CRN 45201

FALL 2012

Course Description

Introduction to theoretical perspectives in interpersonal neuroscience employed in developmental psychology and in the study of interpersonal experiences. This course will also explore the neural mechanisms of emotion, personality and mood as they relate to interpersonal interaction.

This course fulfills the Biological/Cognitive Psychology requirement for Psychology majors. 3 lecture hours per week.

Prerequisites: PSY 3200 and PSY 3410 and Psychology major or Integrated Studies Emphasis in Psychology major; or instructor permission.

Lecture: Monday, Wednesday and Friday 1:00 to 1:50 pm, McDonald 208

Philosophy/Expectations

This course will operate on the philosophy that active engagement with material fosters quality learning. There will be ample opportunity for in-class discussion. Students are expected to read assigned text prior to class and be prepared to participate in discussion to maximize the learning experience. Throughout your involvement in the course you should be testing what you read about specific issues in the textbook and hear in the lectures with your own observations of human behavior in various contexts. The provided course calendar indicates when topics will be covered; however, please allow for some flexibility in the schedule.

There is no attendance policy for this course, other than for administrative purposes. However, absences may result in lost learning opportunities, including possible extra credit opportunities.





Social Science Program Objectives

As an outcome of taking courses in the Social Science program, students shall:

1. Demonstrate the ability to examine human behaviors in a structured and organized way as a means of understanding the human condition. Measured by examination and/or oral and written reports.
2. Demonstrate the ability to recognize the ideas, people and events that are generally thought to be important by social scientists. Measured by examination and/or oral or written reports.
3. Develop a perceptual frame of reference based on social scientific knowledge. Measured by the presence of an attitudinal frame of reference which would be expressed in written or oral activities.
4. Exhibit concepts of critical thinking and scientific methodology in examining human behavior. Measured by the presence of an attitudinal frame of reference which would be displayed in written or oral activities.

**“The bonds that unite another person to our self exist only in our mind.”
Marcel Proust**



Course Objectives and Outcomes

The primary objective of this course is to provide an overview of the brain as a social organ. By the end of this course, students should be able to:

- Demonstrate knowledge of theories of interpersonal neurobiology..
- Demonstrate knowledge of the development of the social brain.
- Demonstrate knowledge of the neurobiology of emotions, regulation, and social behavior.
- Use or apply factual knowledge about interpersonal neurobiology in applied settings.

- Demonstrate knowledge of neuroplastic processes of change.
- Demonstrate knowledge of the effects of isolation, stress and trauma.



Examinations



There will be 4 exams throughout the course. Your lowest exam score will be dropped from the calculation of your final grade. Mid-semester exams will be administered

in the Testing Center (you will be required to present your student ID to take the exam) over a three-day period. Please see the Testing Center website for hours of operation and for further information. The exams will consist of multiple choice, true/false and matching items from the material presented prior to the examination.

Exam Schedule:

	<u>Date</u>	<u>Points</u>
• <u>Exam 1</u>	September 20-22	100
• <u>Exam 2</u>	October 18-20	100
• <u>Exam 3</u>	November 15-17	100
• <u>Exam 4</u>	December 10	100

No early or make-up exams will be permitted for any of the exams under any circumstance.

“We are always in a perpetual state of being created and creating ourselves.”

Daniel J. Siegel

Final Exam

The final exam will be in class on **December 10, 2012, from 12:00 to 2:00 pm** and will cover the material since the previous exam. No early or make-

up exams will be permitted for any of the exams under any circumstance.



Paper

There will be a 10 page paper worth 100 points. Because students have different objectives in pursuing upper division courses in psychology, you will have the option of choosing between two equally rigorous assignments as described below. All papers will be required to adhere to the American Psychological Association Publication Manual. All paper option selections are due on September 10, 2012 by a written statement submitted to the instructor in class. Late or missing selections will reduce the final paper grade by 10 points. All papers are due in class on October 29, 2012. No late papers will be accepted under any circumstance.

Options 1: For students interested in pursuing an academic/research career in psychology, you will select an area of interest from the texts (approved by the instructor) and write a review paper of the selected topic (using at least 10 research articles published in a peer-reviewed journal). Your paper should follow the guidelines for a review article as outlined in the APA Publication Manual.

Option 2: For students interested in pursuing an applied career in psychology, you will select an area of interest from the texts (approved by the instructor) and write an executive summary for use in an applied setting (using at least 10 research articles published in a peer-reviewed journal). Your paper should follow the guidelines as outlined in the APA Publication Manual.

Projected Course Calendar

20 Aug 2012	Course Introduction
22 Aug 2012	Attachment
24 Aug 2012	Attachment
27 Aug 2012	Attachment
29 Aug 2012	Attachment (Reading to be provided)
31 Aug 2012	Attachment (Reading to be provided)
3 Sep 2012	Cozolino: Introduction I—Me—Mine, Chapter 1 The Social Brain
5 Sep 2012	Cozolino: Chapter 2 The Evolving Brain
7 Sep 2012	Cozolino: Chapter 3 The Developing Brain
10 Sep 2012	Cozolino: Chapter 4 The Social Brain: A Thumbnail Sketch (<u>Paper topics due</u>)
12 Sep 2012	Cozolino: Chapter 5 Social and Emotional Laterality
14 Sep 2012	Cozolino: Chapter 6 Experience-Dependent Plasticity
17 Sep 2012	Cozolino: Chapter 7 Reflexes and Instincts: Jumpstarting Attachment
19 Sep 2012	Cozolino: Chapter 7 Reflexes and Instincts: Jumpstarting Attachment
21 Sep 2012	Exam 1 (opens 20 September and closes 22 September; Testing Center)
24 Sep 2012	Cozolino: Chapter 8 Addicted to Love
26 Sep 2012	Cozolino: Chapter 8 Addicted to Love
28 Sep 2012	Cozolino: Chapter 9 Implicit Memory
1 Oct 2012	Cozolino: Chapter 9 Implicit Memory
3 Oct 2012	Cozolino: Chapter 10 Ways of Attaching
5 Oct 2012	Cozolino: Chapter 10 Ways of Attaching
8 Oct 2012	Cozolino: Chapter 11 Linking Gazes
10 Oct 2012	Cozolino: Chapter 12 Reading Faces
12 Oct 2012	Semester Break
15 Oct 2012	Cozolino: Chapter 13 Imitation and Mirror Neurons
17 Oct 2012	Cozolino: Chapter 13 Imitation and Mirror Neurons
19 Oct 2012	Exam 2 (opens 18 October and closes 20 October; Testing Center)
22 Oct 2012	Cozolino: Chapter 14 Resonance, Attunement, and Empathy
24 Oct 2012	Cozolino: Chapter 14 Resonance, Attunement, and Empathy
26 Oct 2012	Cozolino: Chapter 15 Impact of Early Stress
29 Oct 2012	Cozolino: Chapter 15 Impact of Early Stress (<u>Paper due</u>)
31 Oct 2012	Cozolino: Chapter 16 Interpersonal Trauma
2 Nov 2012	Cozolino: Chapter 17 Social Phobia: When Others Trigger Fear
5 Nov 2012	Cozolino: Chapter 17 Social Phobia: When Others Trigger Fear
7 Nov 2012	Cozolino: Chapter 18 Borderline Personality Disorder: When Attachment Fails
9 Nov 2012	Cozolino: Chapter 19 Psychopathy: The Antisocial Brain
12 Nov 2012	Cozolino: Chapter 20 Autism: The Asocial Brain
14 Nov 2012	Cozolino: Chapter 21 From Neurons to Narratives
16 Nov 2012	Exam 3 (opens 15 November and closes 17 November; Testing Center)
19 Nov 2012	Cozolino: Chapter 22 Healing Relationships
21-23 Nov 2012	Holidays
26 Nov 2012	Cozolino: Chapter 23 Social Brain and Group Mind



Projected Course Calendar (continued)

PAGE 5

28 Nov 2012	Perry and Szalavitz: Chapter 1 Tina's World and Chapter 2 For Your Own Good
30 Nov 2012	Perry and Szalavitz: Chapter 3 Stairway to Heaven and Chapter 4 Skin Hunger
3 Dec 2012	Perry and Szalavitz: Chapter 5 The Coldest Heart and Chapter 6 The Boy Who Was Raised as a Dog
5 Dec 2012	Perry and Szalavitz: Chapter 7 Satanic Panic and Chapter 8 The Raven
7 Dec 2012	Perry and Szalavitz: Chapter 9 "Mom is Lying. Mom is Hurting Me. Please Call the Police." Chapter 10: The Kindness of Children, Chapter 11 Healing Communities
10 Dec 2012	Final Exam (12:00 to 2:00 pm in class)

Academic Honesty

As stated in the DSC Student Handbook; "Academic dishonesty in any form will not be tolerated at Dixie State College (Academic Discipline Policy, 3.34)" including cheating, and plagiarism. These acts of academic dishonesty are strictly prohibited. The instructor has the right to all means of academic discipline outlined in the Academic Discipline Policy: <http://www.dixie.edu/humanres/policy/sec3/334.html>



Disruptive Behavior Policy



If your conduct in class affects the learning atmosphere of the class, the instructor reserves the right to drop you from the class. This will happen using the following procedure:

Verbal warning that your behavior is negatively affecting the class.

Written warning that you are negatively affecting the class.

Removal from the class. The instructor will inform the student in writing of this, along with contact information for a supervisor of the instructor so the student can appeal if desired.

Grading

The exams and paper are each worth one-quarter of your total grade (400 points total).

You may receive up to 25 extra credit points (for a maximum total of 400 points for the course) for taking advantage of extra credit opportunities presented randomly during the course.

Grade	Points
A	380—400
A-	360—379
B+	348—359
B	332—347
B-	320—331
C+	308—319

Grade	Points
C	292—307
C-	280—291
D+	268—279
D	252—267
D-	240—251
F	239 or less

Policies for Absences Due to College Related Functions

For students, such as student athletes, who travel as official representatives of the college, absences due to college functions will not negatively affect the student's grade. The student is required to provide the instructor with a schedule of days that will be missed and will be required to negotiate any scheduled work ahead of time with the instructor.

Student Support Services

If you suspect or are aware that you have a disability that may affect your success in the course you are strongly encouraged to contact the Disability Resource Center (DRC) located at the North Plaza Building. The

disability will be evaluated and eligible students will receive assistance in obtaining reasonable accommodations. Phone # 435-652-7516

"Piglet sidled up to Pooh from behind. 'Pooh!' he whispered. 'Yes, Piglet?' 'Nothing,' said Piglet, taking

Campus Resources

Library: For information concerning the library and hours of operation go to <http://library.dixie.edu/>.

Computer Lab: The Computer Lab is located in the Smith Computer Center. For more information go to <http://new.dixie.edu/cit/cis/>.

Writing Center: The Writing Center is located on the fourth floor of the Holland Centennial Commons if you need assistance with a written

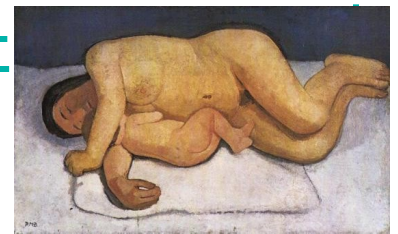
assignment in any class. For more information go to http://new.dixie.edu/english/dsc_writing_center.php.

Testing Center: The Testing Center is located at the North Plaza Building. For more information go to <http://new.dixie.edu/testing/>.

Tutoring Center: The Tutoring Center is located on the fourth floor of the Holland Centennial Commons.

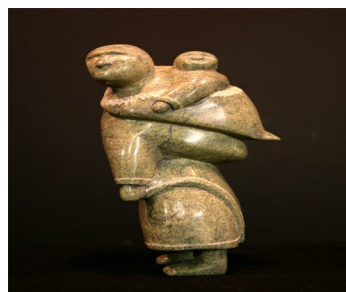
For more information go to <http://dsc.dixie.edu/tutoring/index.htm>.

Disability Resource Center: The Disability Resource Center is located at the North Plaza Building. For more information go to dixie.edu/drcenter



DMail

You are required to frequently check your Dmail account. Important class and college information will be sent to your Dmail account, including DSC bills, financial aid/scholarship notices, notices of cancelled classes, reminders of important dates and deadlines, and othe



information critical to your success at DSC and in your courses. To access your Dmail account, visit go.dixie.edu/dmail. If you do not know your Dmail username or you have forgotten your PIN, visit go.dixie.edu/mydixie and follow the respective instructions.